



Momentum Health Study Data Report

November 2012

BACKGROUND

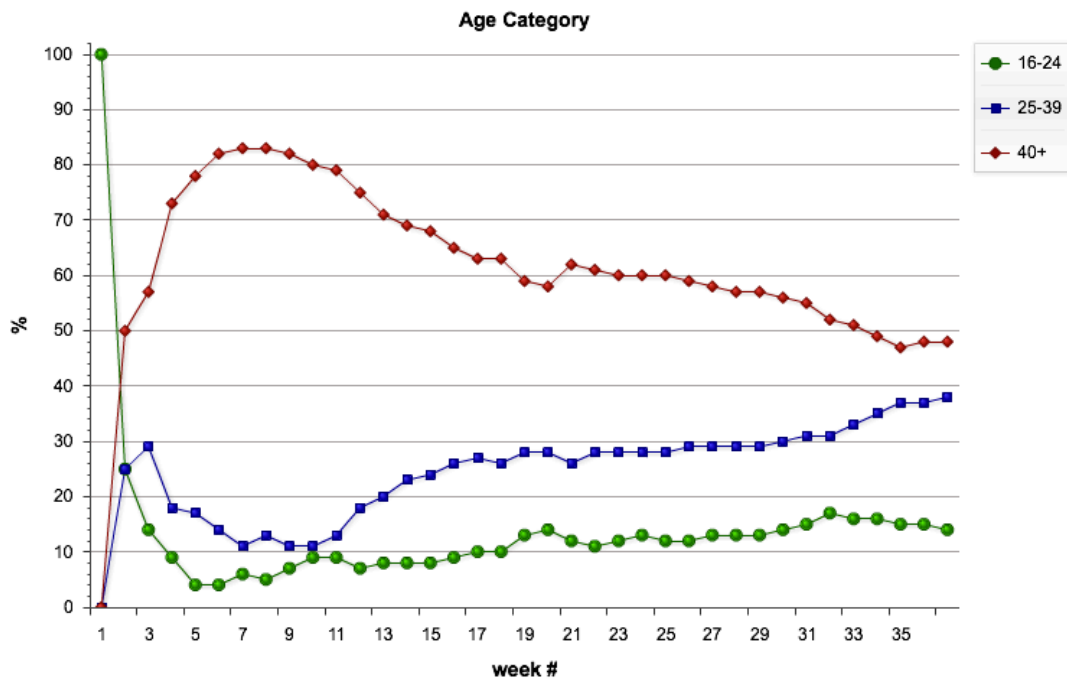
The Momentum Health Study is coordinated by the BC Centre for Excellence in HIV/AIDS and funded by the National Institutes for Health (NIH), National Institute for Drug Abuse (NIDA) and the Canadian Institutes for Health Research (CIHR). Momentum uses Respondent Driven Sampling to recruit a representative sample of gay, bi and other men who have sex with men from the Greater Vancouver area into two serial cross-sections and a longitudinal cohort with a median length of four years.

PROGRESS TO DATE (as of November 1, 2012)

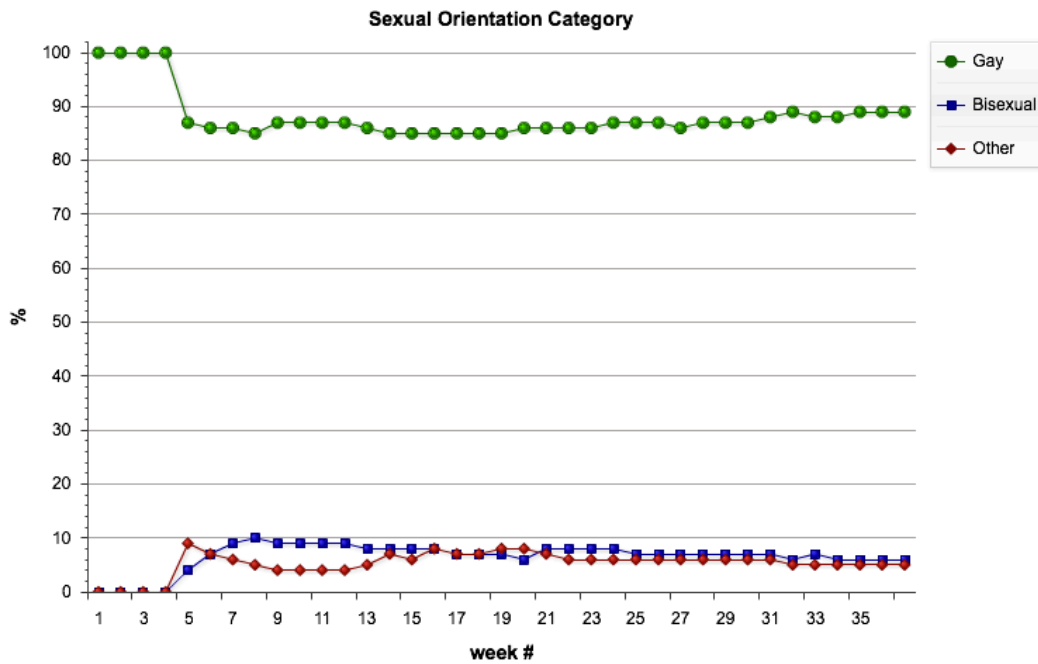
Total number enrolled in serial cross-section #1	168
Total number enrolled in longitudinal cohort (Follow up visit 1 to begin in this month)	144
HIV-positive	56
HIV-negative	78

KEY INDICATORS OF SAMPLE COMPOSITION TO DATE

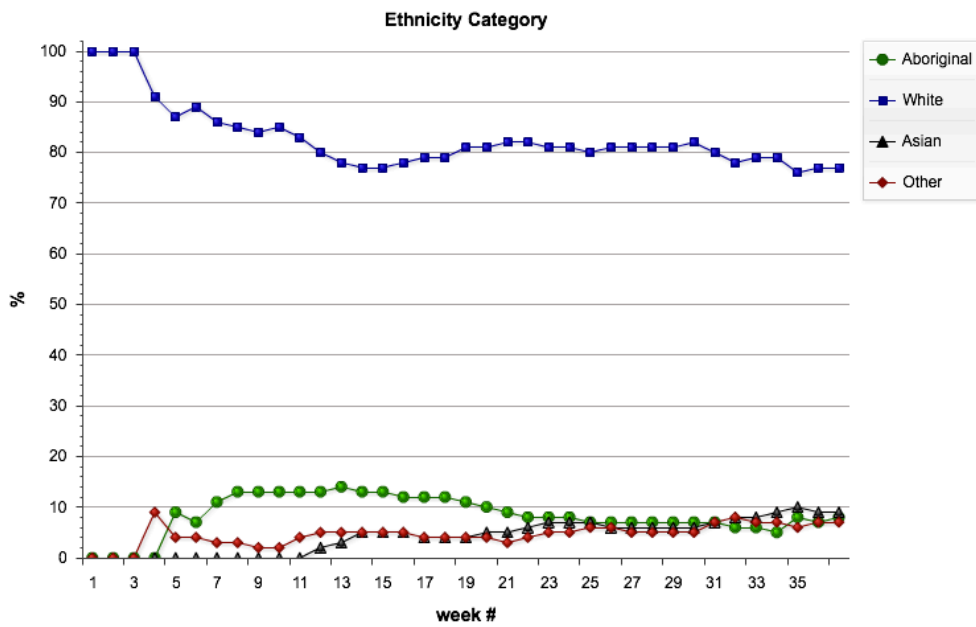
The following series of tables and figures reports cumulative percentages of sample composition by week of enrollment.



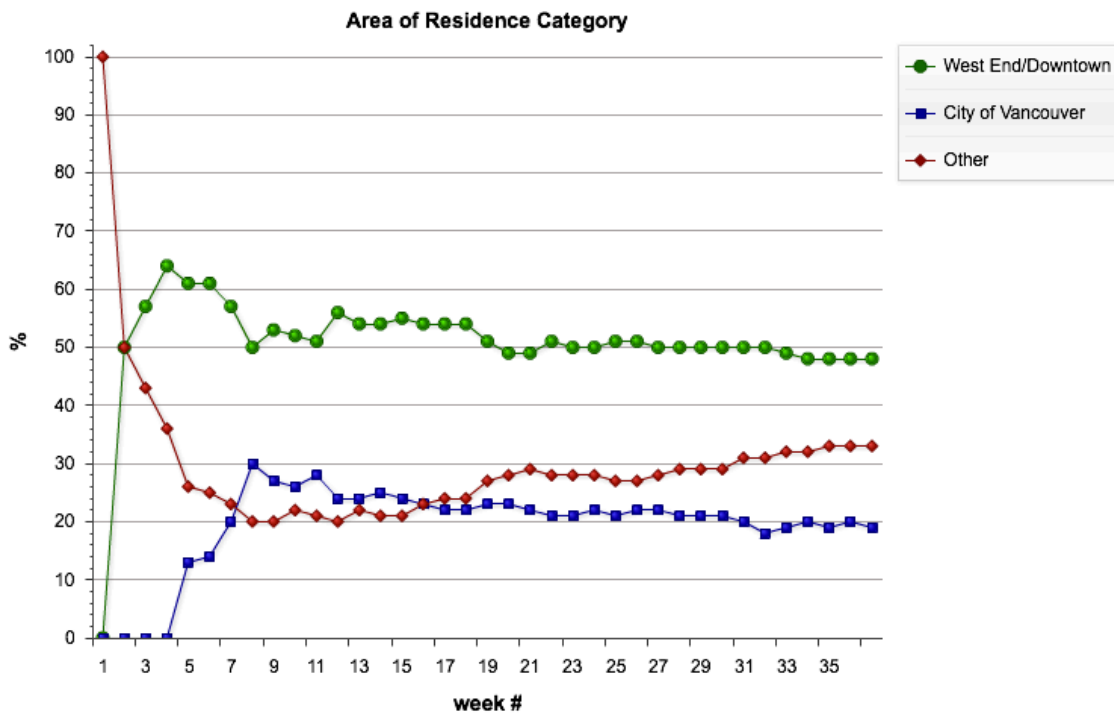
16-24 years	25-39 years	40+ years
14%	38%	48%



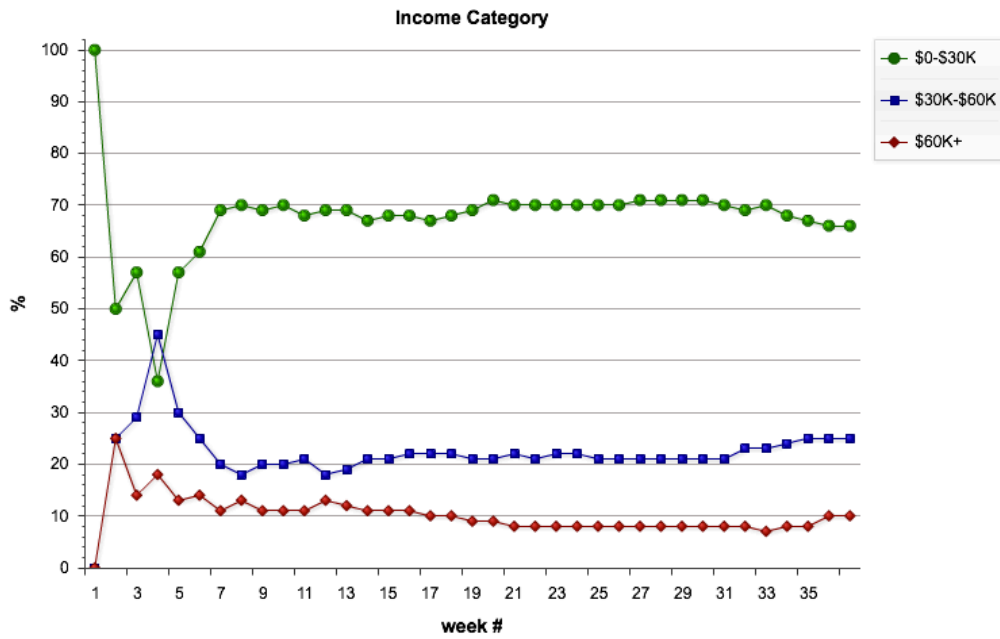
Gay	Bisexual	Other
89%	6%	5%



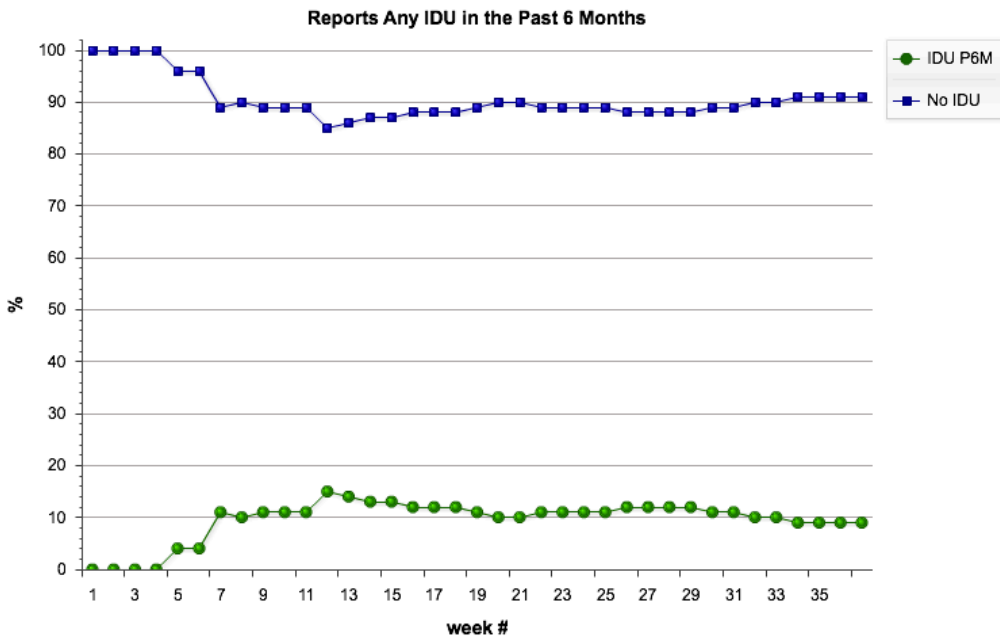
Aboriginal	White	Asian	Other
8%	77%	9%	7%



West End / Downtown	City of Vancouver not DT	Outside City of Vancouver
48%	19%	33%



\$0-\$30K	\$30K-\$60K	\$60K+
66%	25%	10%



IDU P6M	No IDU P6M
9%	91%